



Electrification.  
**Delivered.**<sup>TM</sup>

## **Gabelli Funds**

---

45th Annual Automotive Symposium

*People Finding A Better Way*<sup>®</sup>





# Hosted EV capital markets day on September 28<sup>th</sup>...





# ...which included EV tech showcase and 'ride & drive'





# DAN is a premier Tier-1 EV growth investment and is poised to deliver outsized risk-adjusted financial returns based on these key factors...

Guiding toward a zero-emissions future



Delivering complete e-Propulsion systems with in-house electrodynamics



Expanding margins from software-driven smart systems



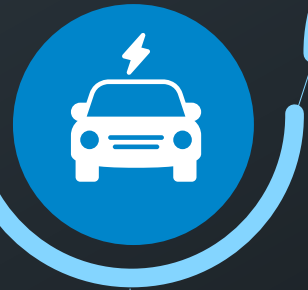
Leveraging global infrastructure and multi-market scope



Growing total addressable market



Enduring product with 3x content-per-vehicle uplift



Existing and emerging commercial channels



Strengthening core business will fund growth



# Delivering complete e-Propulsion systems



## e-Motors



High-voltage e-Motors

Low-voltage e-Motors



## Power Electronics



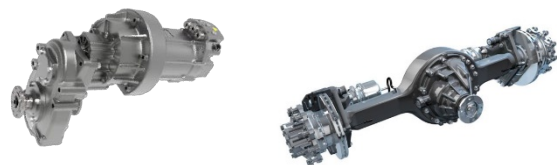
High-voltage Inverters

Low-voltage Inverters

On-board Chargers



## Mechanicals



Gearboxes

Axles



## Software and Controls



Propulsion Control Units

Vehicle Control Units

Charging Control Units





# Customers across all major mobility markets are selecting our technology for their electric vehicles

**Komatsu Electric Mining Drill**

e-Direct Drive



**DANA SPICER**

**KOMATSU**

**Taylor Next-generation Battery-electric Container Handler**



**TAYLOR**

Heavy-duty e-Torque Hubs and SUMO LD™ e-Motor and Power Inverter



**DANA TM4**

**Navistar Electric Medium-duty Truck**

e-Direct Drive



**DANA SPICER**

**MV**

**PACCAR Next-generation Global Electric Medium-duty Truck**

e-Propulsion System

**CONFIDENTIAL**



**DANA SPICER**

**DAF** **KENWORTH** **Peterbilt**

**Major European OEM Heavy-duty Electric Vehicle Lineup**

MOTIVE™ e-Motor



**DANA TM4**

**Navistar Electric School Bus**

e-Direct Drive



**DANA SPICER**

**ICE**

**Major North American OEM Electric Class-8 Truck**

e-Axles



**DANA SPICER**

**Hybrid-electric Super Car**

e-Transmission

**CONFIDENTIAL**



**DANA SPICER**

**Electric Lifestyle Vehicle**

Independent e-Axle



**DANA SPICER**

**Rivian R1T Electric Pickup Truck**

Battery Cooling Plates



**DANA LONG**

**RIVIAN**

**Ford Electric F-150 Lightning**

Battery Cooling Plates



**DANA LONG**

**Nikola Tre Fuel-cell Electric Class-8 Truck**

Metallic Bipolar Plates

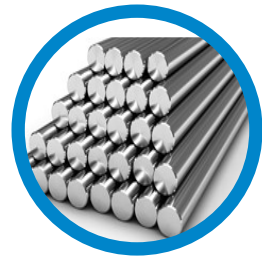


**DANA HYDROSEAL**

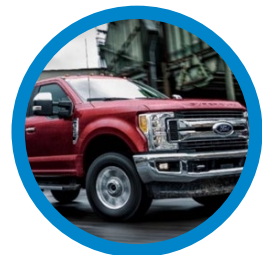
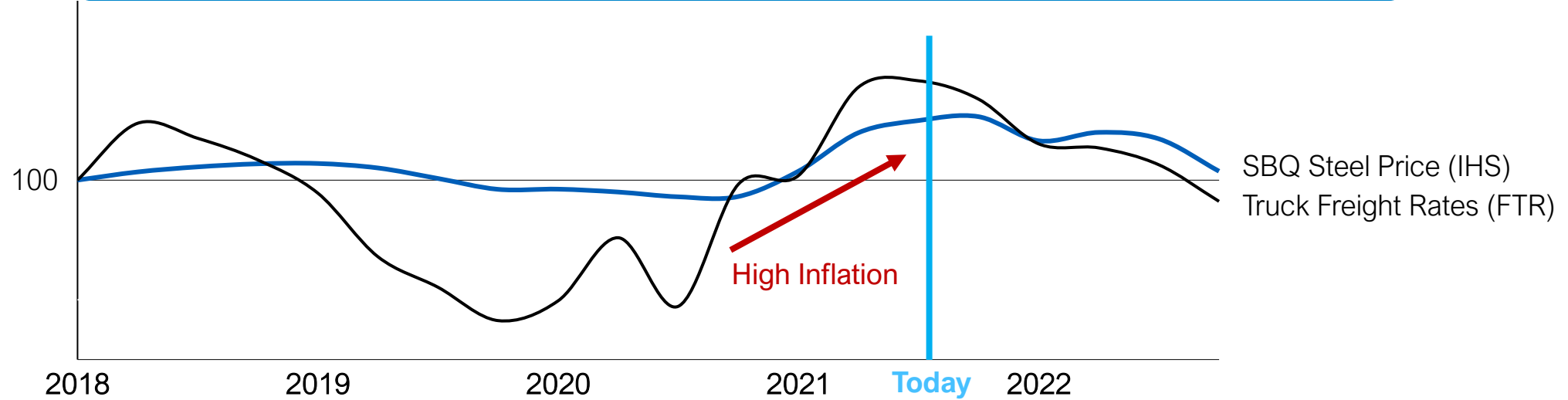
**NIKOLA TRE** **BOSCH**



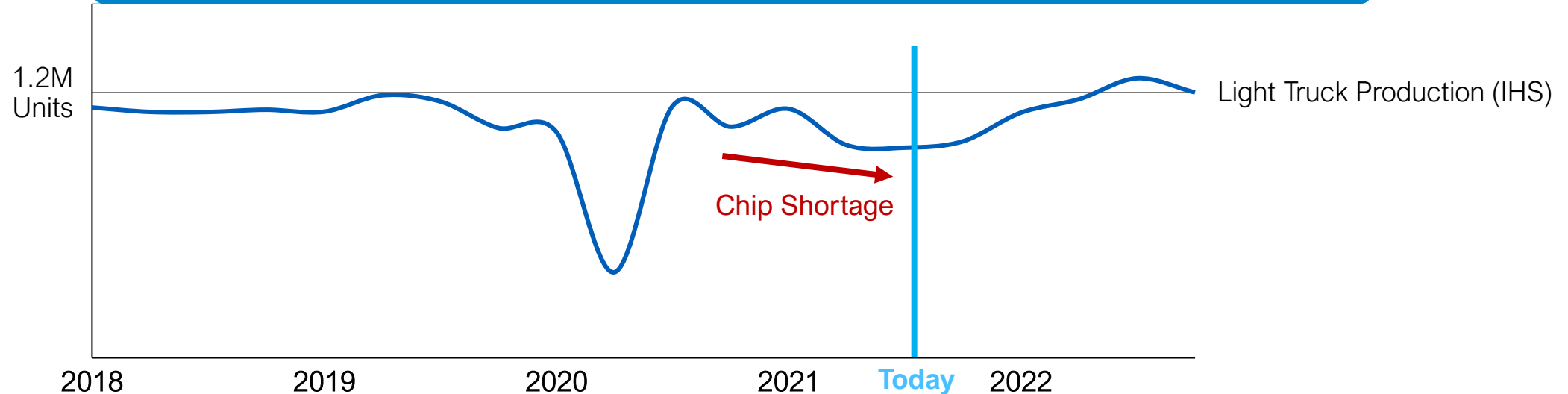
# Near-term market dynamics position us for margin recovery as input costs moderate and production rebounds



### Input Price Indices for SBQ Steel and Truck Freight Rates



### Quarterly N.A. Full-frame Truck Production



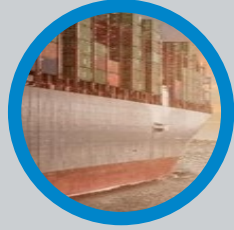
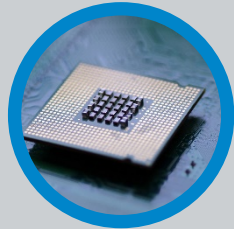
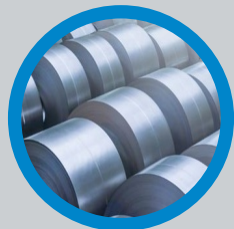
# Positioned for long-term cyclical and secular growth

## Mobility Market Dynamics

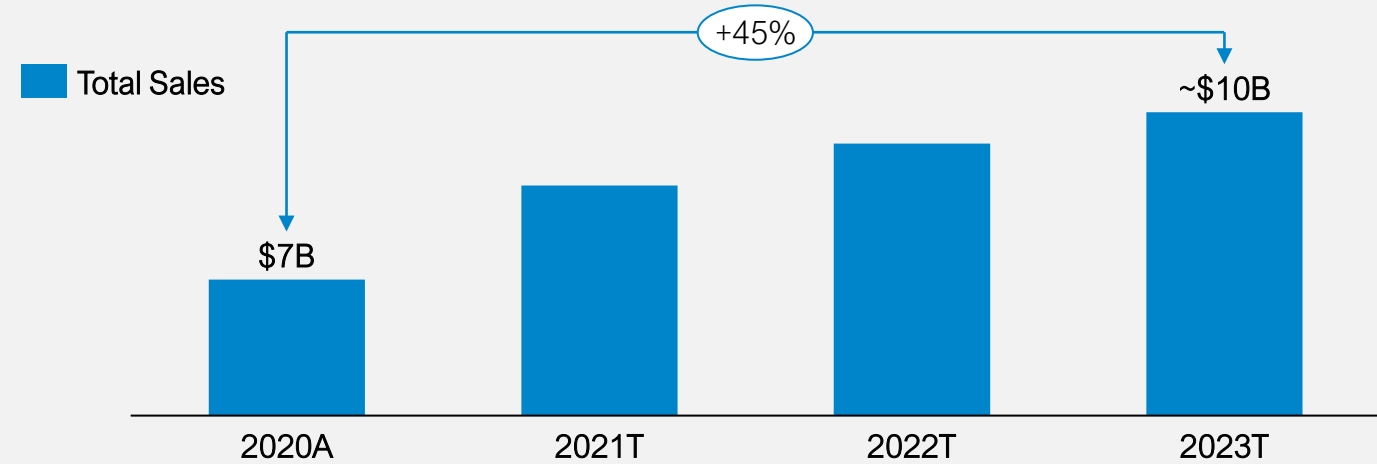
Robust Demand



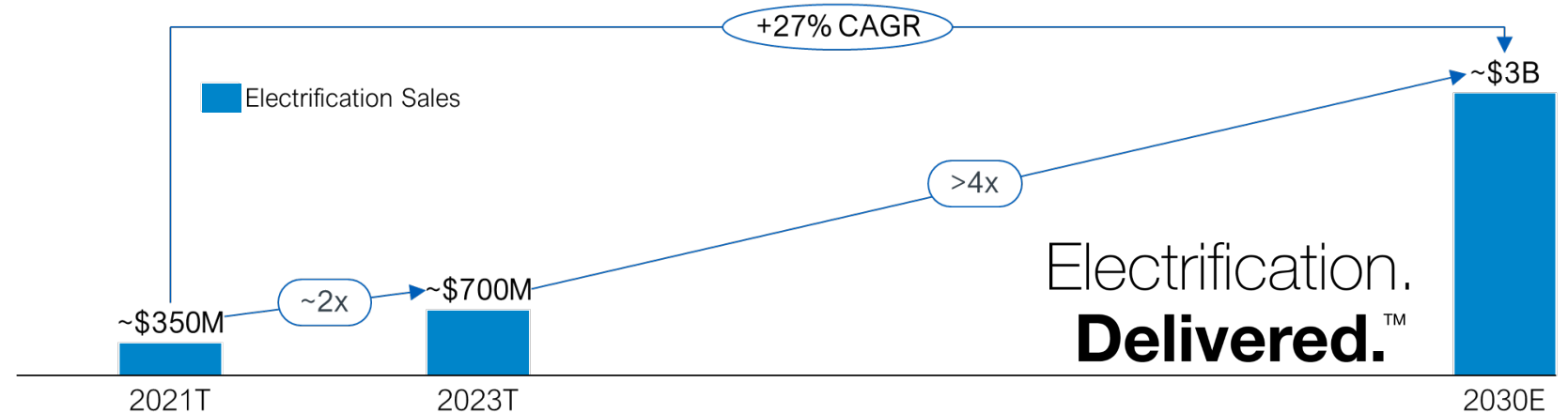
Constrained Supply



## Robust Cyclical Growth



## Above-market Secular Growth



Electrification.  
**Delivered.™**





*People Finding A Better Way<sup>®</sup>*